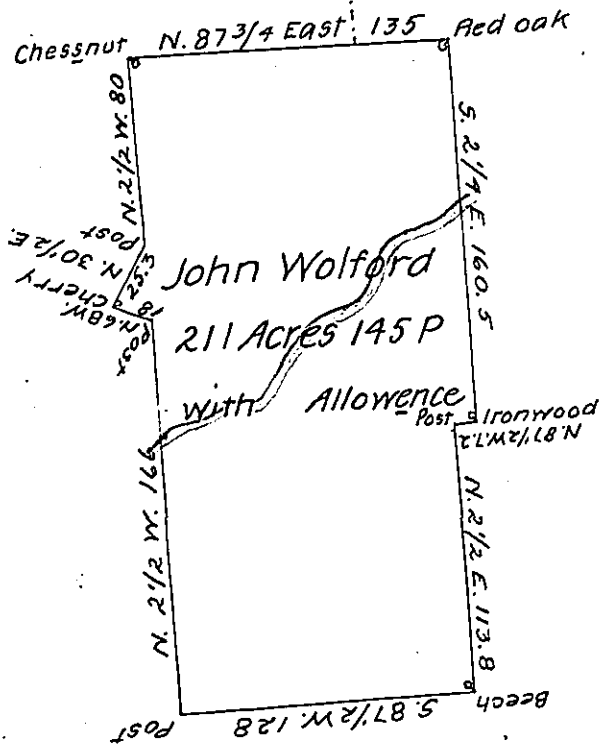


John Love  
C-119-48

John Barnhill  
C-20-91

C-17 263

Henry Brandon



Jacob Snyder

D-12-36

Wm. Riddle  
C-186-143

Situate in Mercer County Wolfcreek Township on the Waters of  
 Wolfcreek-Containing two hundred and eleven Acres & one hundred  
 and forty five perches with Allowence of Six per cent for roads &c.  
 Surveyed in pursuence of a Warrant Granted to John Wolford  
 Dated the 19th Day of February 1831 and <sup>on</sup> of his Actual Settlement &  
 Residence thereon Surveyed May 4th. 1836 by me

John Findley D.S.

To the Surveyor General of the  
 Commonwealth of Pennsylvania

IN TESTIMONY that the above is a copy of the original remaining on file in  
 the Department of Internal Affairs of Pennsylvania, made  
 conformably to an Act of Assembly approved the 16th day of  
 February 1833, I have hereunto set my hand and caused  
 the Seal of said Department to be affixed at Harrisburg,  
 this fifteenth day of May 1907

*Henry Howell*  
 Secretary of Internal Affairs.